



RESPIRATORY PROTECTION



Dromex



Dromex

BREATHE EASY

CHOOSING RESPIRATORY PROTECTION

CONSIDERATIONS FOR MASK SELECTION:

- What is the oxygen content?
- Are there asphyxiants present?
- Is the atmosphere immediately dangerous to life or health?
- Is the atmosphere corrosive or likely to become so?
- Is the atmosphere explosive or likely to become so?
- Is there the possibility of permeation of air contaminants?
- What is the contaminant?
- Are there climatic extremes?

Standard	Description	Class	NPF Nominal Protection Factor	APF Assigned Protection Factor
EN 149	Filtering half mask	FFP1 FFP2 FFP3	4 12 50	4 10 20
EN 405	Valve filtering half mask	FF Gas X P1 FF Gas X FF Gas X P2 FF Gas X P3	4 50 12 33	4 10 10 10
EN 140 (Mask) EN 143 EN 14387 EN 12083	Half mask and quarter mask with filter	P1 P2 P3 Gas X Gas X P1 Gas X P2 Gas X P3	4 12 48 50 4 12 48	4 10 10 10 4 10 10
EN 136 EN 143 EN 14387 EN 12083	Full face mask (all classes)	P1 P2 P3 Gas X Gas X P1 Gas X P2 Gas X P3	5 16 1000 2000 5 16 1000	4 10 40 20 20 20 20

Particulate, Gas & Vapour Filter Selection continued on Page 87....

DISPOSABLE CUP SHAPE RESPIRATORS



QSA 2010 - FFP1
(NRCS AZ2006/21)



QSA 2020 - FFP2
(NRCS AZ2006/20)



QSA 2021 - FFP2 (VALVED)
(NRCS AZ2006/29)

QSA DUST MASKS

- Suitable for a single 8-hour use against solid & water based liquid aerosols
- Protection against inhalation of dangerous particulates
- Constructed from polypropylene and polyester synthetic material preventing allergies
- Aluminium nose bridge adjuster
- Lightweight and comfortable
- Exhalation valve reduces hot air build-up & provides easy breathing in hot & humid environments (QSA 2021 only)

- NRCS Homologated

Suitable Use:

- Household maintenance
- Mining
- Asbestos removal
- Agriculture
- Construction
- General material handling

DRO-AIR 1000 SERIES



1020 - FFP2 (NRCS AZ2004/18)

Complies with BS EN 149:2001 + A1:2009 FFP2 NR D
Dolomite tested as per BSI, CE 725172.



1021 - FFP2 VALVED (NRCS AZ2004/17)

Complies with BS EN 149:2001 + A1:2009 FFP2 NR D
Dolomite tested as per BSI, CE 725172



1231 - FFP3 VALVED (NRCS AZ2004/15)

Complies with BS EN 149:2001 + A1:2009 FFP3 NR D
Dolomite tested as per BSI, CE 725172



1121C VALVED - FFP2

(NRCS AZ2004/24)
Complies with BS EN 149:2001
+ A1:2009 FFP2 OR NR D
Dolomite tested as per BSI, CE 690046



1131 VALVED - FFP3

(NRCS AZ2004/14)
Complies with BS EN 149:2001
+ A1:2009 FFP2 OR NR D
Dolomite tested as per BSI, CE 690046

- Low breathing resistance for increased wearer comfort
- Heavy duty, tab mounted head straps (1231 only)
- Aluminium nose bridge adjuster
- Soft foam nosepiece for comfort & custom fit
- Contour face seal for performance & comfort
- Constructed from polypropylene and polyester synthetic material preventing allergies
- Exhalation valve reduces hot air build-up & provides easy breathing in hot & humid environments

ACTIVE CARBON RESPIRATORS

- Active Carbon Pre-Filter for organic vapours & welding fumes
- Low breathing resistance for increased wearer comfort
- Heavy duty, tab mounted, head straps
- An external aluminium adjustable nose clip
- Constructed from polypropylene and polyester synthetic material preventing allergies
- Soft foam nosepiece for comfort & custom fit
- Contour face seal for performance & comfort
- Exhalation valve reduces hot air build-up & provides easy breathing in hot & humid environments

N9A5 DISPOSABLE RESPIRATORS



- Suitable for a single 8-hour use against solid & water based liquid aerosols, that do not contain oil
- Protection against inhalation of dangerous particulates in high dust areas
- Meets CDC guidelines for M. Tuberculosis exposure control
- Can be used as part of a disease control strategy
- An ergonomic design that provides a comfortable and secure fit for different facial sizes
- A welded elastic strap along with the half face seal foam reinforces the seal with the lowest leakage.
- Lightweight with low breathing resistance for increased wearer comfort
- N95-5151 & N95-6151 includes an exhalation valve, which reduces hot air build-up & provides easy breathing in hot & humid environments
- Conforms to 42 CFR part 84, N95 class, NIOSH approved, TC-84A-448 (6151), TC-84A-7220 (5151) TC84A-7719 (5150)

Suitable Use:

- Agriculture
- Construction
- General material handling
- Medical industry applications



CODE: N95-6151



CODE: N95-5151 (VALVED)



CODE: N95-5150 (UNVALVED)

3000 SERIES

3231- FFP3 VALVED (NRCS/8072/0169)

Complies with BS EN 149:2001 + A1:2009 FFP3 NR D

Dolomite tested as per BSI, CE 690046



- Suitable for a single 8-hour use against solid & liquid based aerosols in high dust areas
- Low breathing resistance for increased wearer comfort
- Adjustable head straps
- Plastic adjustable nose clip
- Contour face seal for performance & comfort
- Soft foam nosepiece for a custom fit
- Exhalation valve reduces hot air build-up & provides easy breathing in hot & humid environments
- Dolomite tested for resistance to clogging

Suitable Use:

- Mining
- Asbestos
- Agriculture
- Construction
- General material handling industries

3 PLY MASK

CODE: DR-F103



- Suitable for a single use
- Spun bonded polypropylene non-woven fabric with filter
- Protection against incidence of cross infection of airborne infective bacterial agents - 95% filtering efficiency
- 100% Latex free ear band loop
- Hypoallergenic
- Can be used as part of a disease control strategy
- 3-Pleat triple layer construction provides stronger support
- Adjustable aluminium nose bar
- Low breathing resistance for increased comfort

Suitable Use:

- Medical
- Dental
- Food preparation
- Clean or sensitive environments

MIDI & FULL MASK RESPIRATORS



SINGLE HALF MASK

CODE: DH-101

- Soft PVC mask with deep face mould for a comfortable fit with an excellent seal
- Dual wide elastic headband connected with a pin swivel connector, adjustable & with a quick release toggle
- Efficient exhalation valve
- For use with the DHCS single unikit filter cartridge system



PVC TWIN HALF MASK

CODE: DH-102

- Soft PVC mask with deep face mould for a comfortable fit with an excellent seal
- Dual wide elastic headband connected with a pin swivel connector, adjustable & with a quick release toggle
- Efficient exhalation mask
- For use with the DHCT twin unikit filter cartridge system



TPR TWIN HALF MASK

CODE: DH-202

- Soft TPR (Thermo Plastic Rubber) with a deep face mould for a comfortable fit with an excellent seal
- Dual wide elastic headband with a skull cradle and a pin swivel connector, adjustable & with a quick release toggle
- Efficient exhalation valve
- For use with the DHCT twin unikit filter cartridge system



FULL FACE MASK

CODE: DH-FFM

- Premium protection against hazardous vapours, gases & particulates
- Thermo Plastic Rubber full face seal
- Anti-fog visor with 220° vision
- 5-Point comfort harness with 2 grip holes ensures easier fitting
- Lightweight dual filter cartridge system evenly distributes weight of the mask during use
- Compatible with Dromex unikit twin filters
- Designed to withstand temperatures up to 70 °C
- One size fits all
- For use with the DHCT twin unikit filter cartridge system





Dromex

BREATHE EASY

CHOOSING RESPIRATORY PROTECTION

PARTICULATE, GAS AND VAPOUR FILTER SELECTION:

Filter Type	For use against	Colour Code	Other Information
A	Organic gases and vapours, boiling point > 65°C	Brown	EN 14387
B	Inorganic gases and vapours	Grey	EN 14387
E	SO ₂ and other acid gases	Yellow	EN 14387
K	Ammonia and its organic derivatives	Green	EN 14387
Hg	Mercury	Red and White	EN 14387, includes P3 particle filter Maximum use time 50 hours No class number
NO	Oxides of Nitrogen	Blue and White	EN 14387, includes P3 particle filter Single use only. No class number
AX	Organic gases and vapours, boiling point < 65°C	Brown	EN 14387 Single use only. No class number
SX	Substance as specified by the manufacturer	Violet	EN 14387
P	Particles	White	EN 143 EN 14387
CO*	Carbon Monoxide	Black	DIN 58620 EN 14387

- Change filters as instructed by the manufacturer, e.g. 'single use only' • Do not use if the expiry date on the filters has passed
- Change filters when damaged or visibly contaminated • Change before the contaminant can be smelled or tasted
- Change before the filter life indicated in your risk assessment
- For replaceable filters, it would be good practice to mark the filter visibly with the date it was taken out of the packaging and fitted to the RPE; an in-house replacement date can be added to this marking.

ACCESSORIES

These bags are designed to protect your reusable respiratory Midi-Mask or Full Face Mask & filters while not in use.

They also include a waist strap with quick release buckle so your equipment can be kept on you during the course of your work.



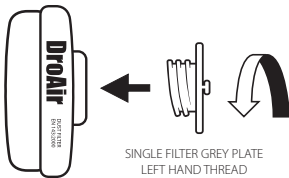
MIDI MASK BAG
CODE: DHRB-BLK



FULL FACE MASK BAG
CODE: DH-FFMBAG

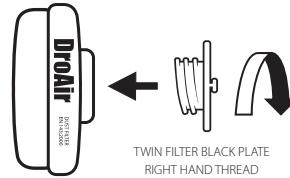
These gas, vapour & dust filters are designed to fit the DroAir range of Midi & Full Masks. The full gas & particulate filter range is colour coded to European standards as per EN 141, EN 143 & EN 14387.

All Unifit filters are individually sealed and supplied with a replacement inhalation valve.



Single Filter Fitment

WARNING! Single filters should only be used with single masks.



Twin Filter Fitment

WARNING! Twin filters should only be used with twin masks.

SINGLE FILTERS



DHCS A1 - Organic



DHCS P2 - Particle



DHCS / DHCT P2PF Pre-filter

*Available for single & twin cartridge respirators

Suitably used with Dromex® gas cartridges that fit onto the Dromex cartridge respirators filtering out solids, dust and liquid aerosol hazards, which cannot be filtered by chemical cartridges.

Pre-filters prolongs the life of the corresponding gas filter.

TWIN FILTERS



DHCT A1 - Organic



DHCT A2- Organic



DHCT B1 - Inorganic



DHCT E1 - Acid gases



DHCT-ABEK 1

- Organic, Inorganic,
Acid & Ammonia



DHCT P2 - Particle



DHCT P3 - Particle



DHCT P3PF - Pre-filter



South African Institute of
Occupational Safety and Health



www.saioosh.co.za



Saioosh is recognised by the South African Qualifications Authority (SAQA) as the Professional Body to register Occupational Health and Safety Professionals in South Africa in terms of the NQF Act, Act 67 of 2008.

"We believe that all employees in any work environment are entitled to maximum safety protection and that employers should not have to compromise on the quality of the PPE products they provide for their staff."

Stel Stylianou, CEO

KZN HEAD OFFICE
Unit 1, 1 Blase Road
New Germany, 3610
South Africa
E. sales@dromex.co.za
T. +27 (0)31 713 1960
F. +27 (0)31 705 6508

JOHANNESBURG
Unit 1, Riley Office Park
15E Riley Road
Bedfordview, 2007
South Africa
T. +27 (0)11 450 0444
F. +27 (0)11 450 0434

CAPE TOWN
Unit A26, Block 1
Northgate Office Park
Section Road, Brooklyn
Cape Town, 7405
South Africa
T. +27 (0)21 224 0935



Dromex

www.dromex.co.za

SEPTEMBER 2022

Dromex® and all associated logos are registered trademarks. Dromex® reserves the right to make changes without further notice to any products herein to improve function, design or reliability and validity. Dromex® does not assume any liability arising out of the application or use of any product described herein. Reproduction in whole or in part is prohibited without the prior written consent of the copyright owner.